

**beyond**  
GROUP

**PRACTICE BRIEF**  
2024

**Sustainability & ESG**

# Meaningful Transformations Toward Sustainability

## An Ecosystem Approach

# CONTENT

INTRODUCTION

**AN ECOSYSTEM APPROACH TO SUSTAINABILITY ..... 3**

**Beyond Group ..... 3**

**Engagement of Ecosystem Actors ..... 4**

**Building Ecosystem Momentum ..... 4**

*Sustainable Impact Measurement Framework ..... 5*

COMMUNITIES: THE SOCIAL & CULTURAL LEVER

**CIRCULAR ECONOMY & GREEN ENTREPRENEURSHIP ..... 6**

**A Circular Economy Approach ..... 6**

*The Four-Step Circular Process ..... 7*

**A Green Entrepreneurship Approach ..... 8**

**Circular & Green Economy in Fragile Contexts ..... 8**

BUSINESSES: THE INNOVATION & ECONOMIC ENGINE

**SUSTAINABILITY STRATEGY & ORGANIZATIONAL TRANSFORMATION ..... 9**

**Solution-Driven Sustainability Strategies ..... 9**

**Innovation-Powered Organizational Transformation ..... 10**

GOVERNMENTS: THE POLICY & SYSTEM ENABLER

**SYSTEMIC SOLUTIONS & CAPACITY SHARING ..... 11**

**Systemic Policy Solutions Design ..... 11**

**Capacity Sharing for Leadership Engagement ..... 12**

INNOVATION & TECHNOLOGY INTEGRATION

**DIGITAL SOLUTIONS FOR SCALABLE & SUSTAINABLE ECOSYSTEM MOMENTUM ..... 13**

**EM-SDI ..... 13**

*SEEN Platform ..... 14*

## INTRODUCTION

# AN ECOSYSTEM APPROACH TO SUSTAINABILITY

In recent years, the concept of sustainability has garnered significant attention globally, a trend accelerated by the urgency of climate change, increasing social inequalities and the erosion of governance standards. International treaties, such as the Task Force on Climate-related Financial Disclosure, the Paris Climate Agreement, the Fit for 55 Targets Package, the EU Green Deal, and the EU Sustainable Finance Strategy, have laid down frameworks and aspirations for sustainable actions.

The United Nations' Sustainable Development Goals (SDGs) offer a comprehensive viewpoint, defining sustainability as a complex, global endeavour requiring a simultaneous and interdependent pursuit of socio-cultural, environmental, economic, political, and institutional goals.

Achieving sustainability in an increasingly interconnected world cannot be an isolated endeavour. To contribute meaningfully to this global transformation, Beyond Group, embarks on supporting governments, businesses and communities to achieve their sustainability aspirations.

We embrace a holistic ecosystem approach, that combines evidence-based methodologies, multi-disciplinary perspectives, and collaboration efforts towards achieving a sustainable future.

Central to our multi-disciplinary approaches and collaborative mechanisms is the active engagement and participation of multiple stakeholders within the sustainability ecosystem. We recognize that no single actor can address the complex challenges of sustainability alone. Instead, we work collaboratively with communities, businesses, and governments to drive meaningful change.

By engaging ecosystem actors, we leverage diverse knowledge, expertise, and resources to develop innovative solutions and implement effective strategies. In doing so, we seek to understand the unique needs, values, and cultural practices to the contexts in which we operate to ensure that our initiatives are relevant and well-adopted.

Our goal is to create momentum within the sustainability ecosystem—a collective drive among all stakeholders to realize shared sustainability goals. We believe that achieving sustainability requires more than just isolated efforts; it requires systemic change that permeates every level of society.

To build ecosystem momentum, we focus on promoting circular and green economic practices, developing sustainability strategies, and designing policies and systems that support sustainable development.

At Beyond Group, our commitment to unlocking a more sustainable future manifests in the collaborative partnerships we foster and innovative solutions we leverage to drive a future where social, environmental, and economic prosperity are synonymous, ensuring a better quality of life for all.

## BEYOND GROUP MEANINGFUL CONSULTING FOR SUSTAINABILITY

In today's interconnected global landscape, sustainability has emerged as a critical imperative for governments, businesses, and communities alike. At Beyond Group, we champion sustainability as a central commitment. We firmly believe that sustainable solutions necessitate active engagement with stakeholders through partnership and a comprehensive, cross-sectoral approach to address environmental, social, and economic challenges.

Operating across Europe, Central Asia, the Caucasus, and the MENA region, Beyond Group is committed to fostering sustainability through all our practices. While our dedicated Sustainability & ESG practice, Kompetus head-quartered in Germany, spearheads these initiatives, we understand that sustainability extends beyond isolated efforts.

Our multinational consultancy harnesses the expertise of diverse practices, including Public Policy & Management, Organizational Learning & Development, and Innovation & Technology Integration. By integrating these disciplines, we empower governments, businesses, and development partners worldwide to confront pressing global challenges and align growth aspirations with ecological responsibility, social equity, and long-term economic sustainability.

At Beyond Group, we recognize that achieving sustainability demands a comprehensive approach that acknowledges the interconnectedness of social, environmental, and economic systems. Through leveraging our global perspective coupled with localized expertise we strive to drive meaningful, scalable and lasting impact around the world.

KOMPETUS *member of Beyond Group*

BERLIN, GERMANY



### Supporting Your Sustainability Transformation Journeys

*Strategy Design & Organizational Consulting  
For Sustainability & ESG*

[www.kompetus.de](http://www.kompetus.de)

## ENGAGEMENT OF ECOSYSTEM ACTORS

The active engagement and participation of multiple stakeholders within an ecosystem across communities, businesses and governments is essential to achieve sustainable development:

### COMMUNITIES

#### Social & Cultural Lever

We look to communities as the social and cultural levers of a sustainable society. The individuals and organizations, such as civil society, non-profit and academic institutions, as well as vulnerable groups all help shape the broader values and behaviours that resonate through the remaining nodes of the ecosystem.

### BUSINESSES

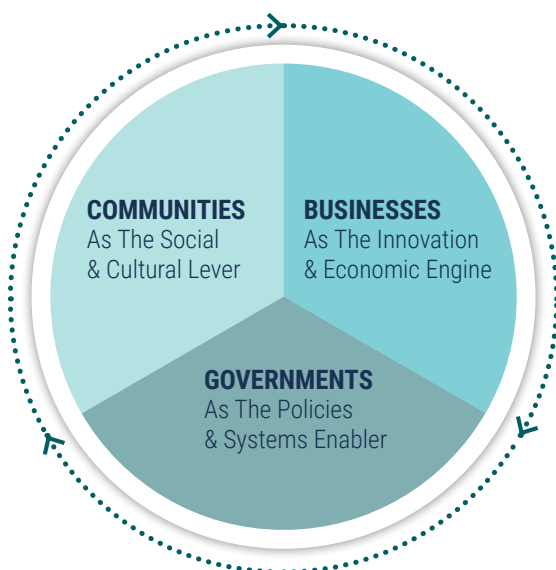
#### Innovation & Economic Engine

We give consideration to the private sector in all its diverse forms as they constitute the engines of innovation and economic development. Micro, small and medium-sized enterprises, start-ups, cooperatives and large corporations as well as business associations and networks are crucial for any sustainable development framework.

### GOVERNMENTS

#### Policies & Systems Enabler

We engage with local, national, and international governmental bodies, development agencies and multi-lateral organizations as well as policy-making entities. These actors are the enablers of systemic solutions that create a policy environment where sustainability can thrive and be scalable.



## BUILDING ECOSYSTEM MOMENTUM

The collective drive among stakeholders to realize shared goals of sustainability across all initiatives they undertake is what we call 'Ecosystem Momentum'. We aim to achieve an Ecosystem Momentum through promoting circular and green economic practices, developing sustainability strategies, designing policies and systems across all engagement nodes at the level of communities, businesses and governments.

We build an Ecosystem Momentum through a seven step model that ensures the inclusion, participation and partnership of all stakeholders throughout a project cycle.



### 1. Mapping Stakeholders

Identify all relevant stakeholders ranging from local communities and government agencies to suppliers and investors, non-profit and academia, to comprehend different roles played in the ecosystem.



### 2. Analyzing roles, Influence & Dynamics

Understand each stakeholder's potential contribution, influence, and dynamics within the ecosystem, to strategize their engagement and contributions.



### 3. Co-Designing Solutions

Engage stakeholders in co-designing solutions through participative methodologies like visioning retreats, design thinking workshops and thematic focus groups to ensure ownership and accountability.



### 4. Dialogue Facilitation

Facilitate dialogue with stakeholders through various online and offline channels to help in continuously building consensus on collective strategies and actions.



### 5. Partnership Building

Assist in building partnership among stakeholders, creating a collaborative environment where resources and knowledge are mutually shared to effectively address complex challenges and capitalizing on opportunities.



### 6. Implementation Support

Assist stakeholders in implementation and in navigating the complexities and challenges offering the required support to ensure an efficient realization of the intended policies and strategies.



### 7. Leveraging Collective Knowledge

Capitalize on the collective wisdom and networks of all stakeholders to resolve issues, innovate solutions, and share those practices to ensure a sustainable momentum.

# 5Ps

## SUSTAINABLE IMPACT MEASUREMENT FRAMEWORK

Our aspiration to achieve sustainable change is built on a quintuple bottom line, inspired by the 5Ps of the UN SDGs, within which Polity and Partnership are considered in addition to People, Planet, and Prosperity.

This approach enables us to gauge our efforts effectively and ensure that we are a part of the meaningful systemic change we advocate for. It reflects our commitment to be not just consultants in the field of sustainability but active participants in the creation of a more sustainable and equitable world.

### SUSTAINABLE IMPACT MEASUREMENT FRAMEWORK

**PLANET**

We are dedicated to environmental stewardship. We understand the importance of responsibly managing natural resources and reducing our impact on Earth's ecosystems. We believe that the health of our planet directly affects the well-being of all its inhabitants.

- Environmental Health
- Ecological Footprint
- Natural Resources

**POLITY**

We understand the vital role governance structures play in achieving sustainable outcomes. We believe fair, transparent, and inclusive governance systems are essential to ensuring social stability and access to fundamental rights.

- Policy Innovation
- Institutional Efficiency
- Participatory Governance

**PEOPLE**

We see people's well-being as closely tied to that of their communities in which culture and diversity are essential components of social cohesion. We advocate for equitable access to a decent quality of life for all, enabled by economic models that support them.

- Social Cohesion
- Social Justice
- Social Equity

**PROSPERITY**

We aim to foster economic well-being for all. We define our success beyond measures of economic growth alone, through fair distribution of wealth and resources as well as the provision of essential services that enhance the quality of life for all people.

- Economic Inclusion
- Financial Sustainability
- Value Creation

**PARTNERSHIP**

We confront challenges to implementing sustainable solutions by advocating for multi-stakeholder partnerships. We recognize the intricacies involved in balancing diverse interests, and lean into partnerships as an effectively means for mitigation.

- Participatory Processes
- Knowledge Sharing
- Stakeholder Engagement

COMMUNITIES: THE SOCIAL & CULTURAL LEVER

# CIRCULAR ECONOMY & GREEN ENTREPRENEURSHIP

By leveraging existing local circular and green traditions, practices, and solutions, we can tap into the power of community social and cultural assets, serving as a pivotal lever for the sustainability ecosystem.

The concept of a circular economy has become increasingly important as a sustainable business model that focuses not only on reducing waste but also reusing, repairing, refurbishing, remanufacturing, repurposing and recycling products and material. This model is intrinsically linked to green entrepreneurship, a business approach aimed at solving environmental challenges through innovative products, services, or processes that are both sustainable and profitable.

While those concepts are trending nowadays, they are in fact age-old practices within many communities, simply awaiting broader recognition and scaling up to unlock their full potential for sustainable development.

Through designing ecosystem development strategies, conducting policy research, facilitating capacity sharing activities, engaging stakeholders and providing technological solutions, Beyond Group's approach focuses at the micro, meso and macro levels while building on existing practices anchored in communities' social and cultural fabric.

## A CIRCULAR ECONOMY APPROACH

Beyond Group's approach to the circular economy is deeply inspired by nature and enriched by social and cultural practices that prioritize sustainability. It is aligned with UNEP Circularity Platform's focus on resource conservation and reducing environmental impacts, all while supporting economic development and human well-being.

## PRINCIPLES OF A CIRCULAR ECONOMY

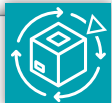
### Nature-Based Solutions & Cultural Practices

Emphasizing circular models that maintain material value and integrate traditional community practices, we leverage both nature's wisdom and cultural heritage to foster scalable, sustainable solutions.



### Lifecycle Interventions

Through lifecycle thinking, strategic intervention points are identified to decouple resource use from environmental impacts, aligning with UNEP's goals for sustainable consumption and production.



### Value Chain Collaboration

Recognizing the importance of the entire value chain, we engage stakeholders across sectors to collectively transition towards a more circular economy, ensuring interventions are inclusive and culturally sensitive.



### Value Retention & Circular Processes

Incorporating various value retention loops (user-to-user, user-to-business, and business-to-business) to extend product lifecycles through reuse, repair, refurbishment, remanufacture, repurpose, and recycle.



Beyond Group is part of the SwitchMed Initiative which aims at supporting and connecting stakeholders to scale-up eco and social innovations through policy development, demonstration activities and networking opportunities. It supports policymakers, eco-innovative small and medium-sized enterprises, industries, start-ups and entrepreneurs in the Southern Mediterranean countries.

## PUBLICATIONS

### Mapping the Circular Economy Ecosystem in the MENA Region 2023



*The study aims to support the transition of MENA countries toward circular economies. Through defining waste patterns in textiles, agro-food, and construction industries, the report identifies opportunities for waste reduction offering country-specific recommendations rooted in local culture while capitalizing on accessible technologies to provide both environmental and economic benefits.*

# THE FOUR-STEP CIRCULAR PROCESS

United Nations Environment Programme UNEP, Circularity Approach - 2019

## REDUCE BY DESIGN

Minimize material use at the design phase.

## USER-TO-USER

Encourage reuse to maintain product function.

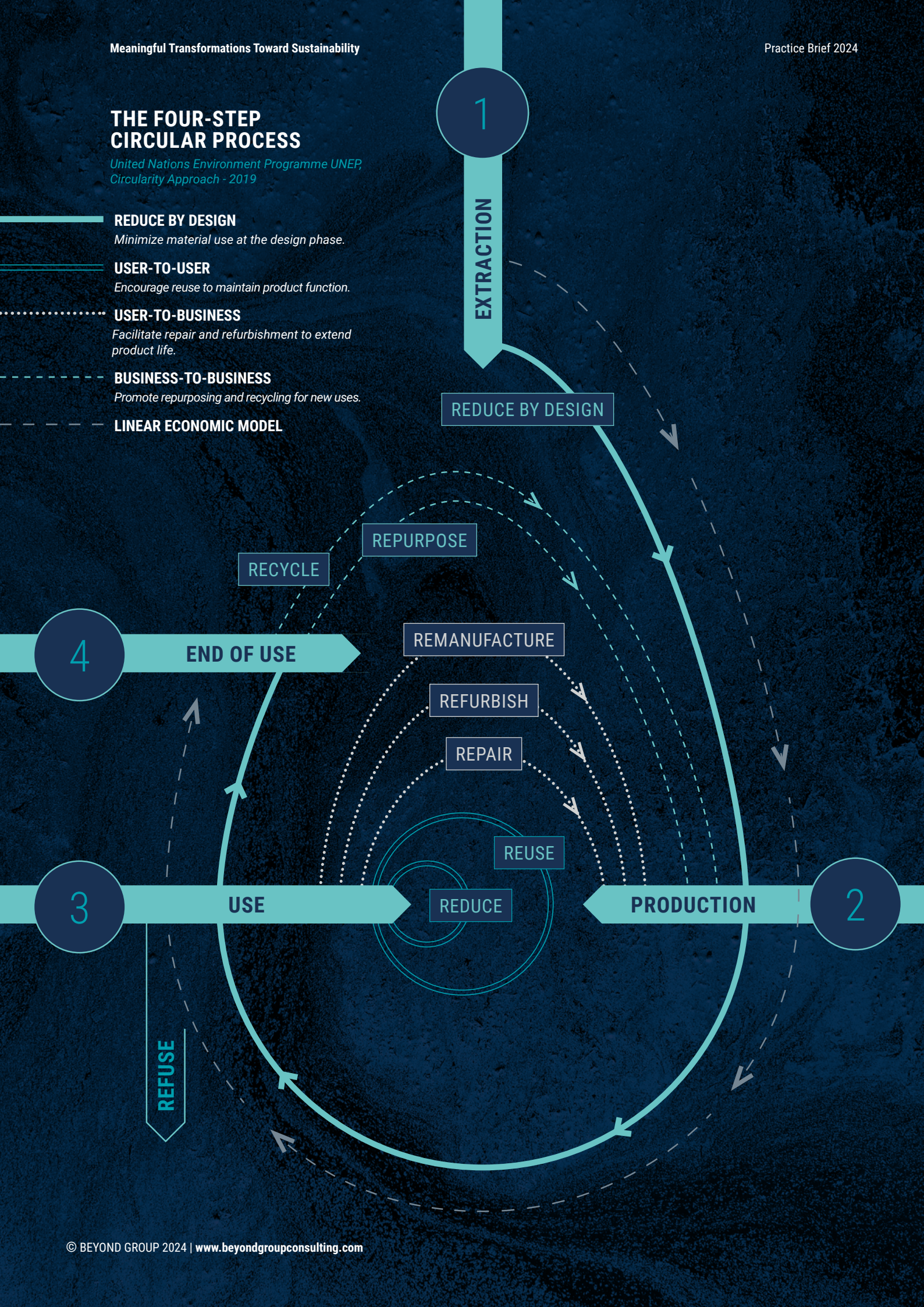
## USER-TO-BUSINESS

Facilitate repair and refurbishment to extend product life.

## BUSINESS-TO-BUSINESS

Promote repurposing and recycling for new uses.

## LINEAR ECONOMIC MODEL



## A GREEN ENTREPRENEURSHIP APPROACH

Beyond Group adopts a holistic ecosystem approach to green entrepreneurship, acknowledging its pivotal role in fostering a circular and sustainable economy. By integrating insights from policy and academia, our strategy elevates green entrepreneurs as catalysts for change. We engage with a broad spectrum of stakeholders in technology, policy, and economics, striving to expedite the shift towards a business model that harmonizes environmental, social, and economic sustainability. Our approach underscores the importance of rooting green entrepreneurship within existing community practices, ensuring that it resonates with and amplifies local sustainable efforts.



### POLICY COLLABORATION

We work closely with policymakers to ensure that green entrepreneurs are equipped with supportive regulations and incentives, promoting large-scale, eco-friendly innovations.



### RESOURCE & ENERGY EFFICIENCY

Our focus extends to the complete life cycle of products and services, encouraging entrepreneurs to minimize resource use and waste.



### STAKEHOLDER ENGAGEMENT

We help green entrepreneurs openly communicate their sustainability efforts, thereby building trust and facilitating consumer choices towards more sustainable products.



### MARKET ADAPTATION

In a rapidly changing environment, our ecosystem approach helps entrepreneurs adapt and find solutions to prevent market failures leading to environmental degradation.



### SUSTAINABLE PRACTICES

We extend the principles of sustainability to the work environment, advocating for green and sustainable practices that reflect the ethos of the ventures we support.

## CIRCULAR & GREEN ECONOMY IN FRAGILE CONTEXTS

Beyond Group has garnered experience working on circular and green economy in fragile contexts across various sectors, notably textile, agro-food, and construction.

We have developed methods and tools to deal with challenges posed by the fragility of the context—be it economic instability, social tensions, or environmental vulnerabilities— that heighten the need for innovative and resilient solutions.

One of the defining features of Beyond Group’s approach is the contextualization of sustainable business models to suit local cultures. As such, we start by learning from existing models and indigenous knowledge. Whether we are tapping into traditional agricultural practices for sustainable farming or construction techniques, our goal is to build upon what is already known and practiced within the community.

This approach allows us to integrate modern best practices in sustainability with local traditions, creating hybrid models that are both innovative and culturally relevant.

Beyond Group has gained significant experience in building and supporting social entrepreneurship ecosystems in different parts of the world such as Tunisia, Georgia, Cameroon, Lebanon and Ghana. The lessons learned from those experiences have been insightful to impact green entrepreneurship ecosystems.



### NETWORKS

**INVESTMED**  
Innovative Sustainable Start-ups for the Mediterranean 2023

*Beyond Group is a member of INVESTMED, an initiative funded by the European Union’s ENI CBC Med Programme. It aims to support the development of sustainable entrepreneurship particularly in the green, blue, and creative sectors with a focus on generating economic opportunities for young people and women.*

*The initiative strategy is threefold:*

- Enhancing Capacity For Sustainable Business Management
- Facilitating Access To Financing And Investment
- Building A Culture Around Intellectual Property Rights For Entrepreneurs And Public Authorities





BUSINESSES: THE INNOVATION & ECONOMIC ENGINE

# SUSTAINABILITY STRATEGY & ORGANIZATIONAL TRANSFORMATION

Businesses stand as pivotal engines of innovation and economic development within the sustainability ecosystem, driving forward solutions that not only meet the present needs but also safeguard the future. Their role in pioneering and implementing sustainable practices is crucial in steering the economy towards environmental stewardship, social responsibility, and governance excellence.

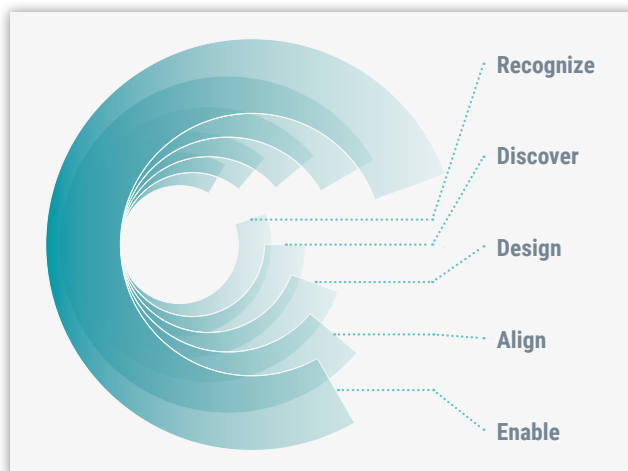
Environmental, Social, and Governance (ESG) parameters have rapidly ascended to become an imperative for long-term companies' survival and sustainability. At Beyond Group, we understand that simply 'checking the box' on ESG compliance is both insufficient and unsustainable. We support businesses beyond mere compliance into a realm of resilience and value-creation through facilitating the development of Solution-Driven Sustainability Strategies, then assisting in implementing those strategies through an Innovation-Powered Organizational Transformation.

We help companies establish a balance between internal sustainability goals and external ESG criteria imposed by regulators and investors. Our consultative approach ensures compliance with various international standards and regulations, such as CSRD (ESRS), the German Supply Chain Act and the ISSB standards.

## SOLUTION-DRIVEN SUSTAINABILITY STRATEGIES

### AN AGILE STRATEGY FRAMEWORK

In a business landscape where adaptability and sustainability are no longer optional, Beyond Group has been accompanying businesses in Germany and internationally using its Integrated Agile Strategy Framework. We use an agile approach with a deep-rooted focus on Environmental, Social, and Governance (ESG) parameters, empowering organizations to act swiftly, responsibly, and sustainably.



#### RECOGNIZE

##### Diagnostic Sustainability Performance Assessment

We conduct a diagnostic to map current systems, policies, and practices. Understanding the organizational context is crucial to identifying gaps against the business vision. This serves as the foundation for our agile approach, emphasizing adaptability and feedback.

#### DISCOVER

##### Integrated Materiality Framework

We engage in a double materiality exercise that integrates both internal and external stakeholder perspectives. Through iterative cycles, we identify material sustainability topics relevant to the organization, aiding in the design of actionable KPIs that align with the business's long-term vision and goals.

#### DESIGN

##### Sustainability Strategy Development/Optimization

We integrate insights from diagnostics to create or refine a dynamic Sustainability Strategy. This includes setting clear sustainability goals, developing a detailed roadmap for achieving these goals, and identifying required resources. We focus on innovation and the integration of sustainability into core operations, ensuring the strategy is adaptable and aligned with the company's long-term sustainability vision.

#### ALIGN

##### Strategy Implementation Support Modalities

We offer support services for effective strategy implementation through change management and support modalities, such as data collection, stakeholder engagement, and capacity sharing. Characterized by short implementation sprints and constant feedback loops, this phase enables real-time adjustments to business sustainability objectives.

#### ENABLE

##### ESG Monitoring and Reporting

We assist businesses in communicating ESG performance internally and externally, preparing sustainability reports in accordance with globally recognized standards. The monitoring and reporting exercise allows companies to transfer knowledge and adjust their strategies accordingly.

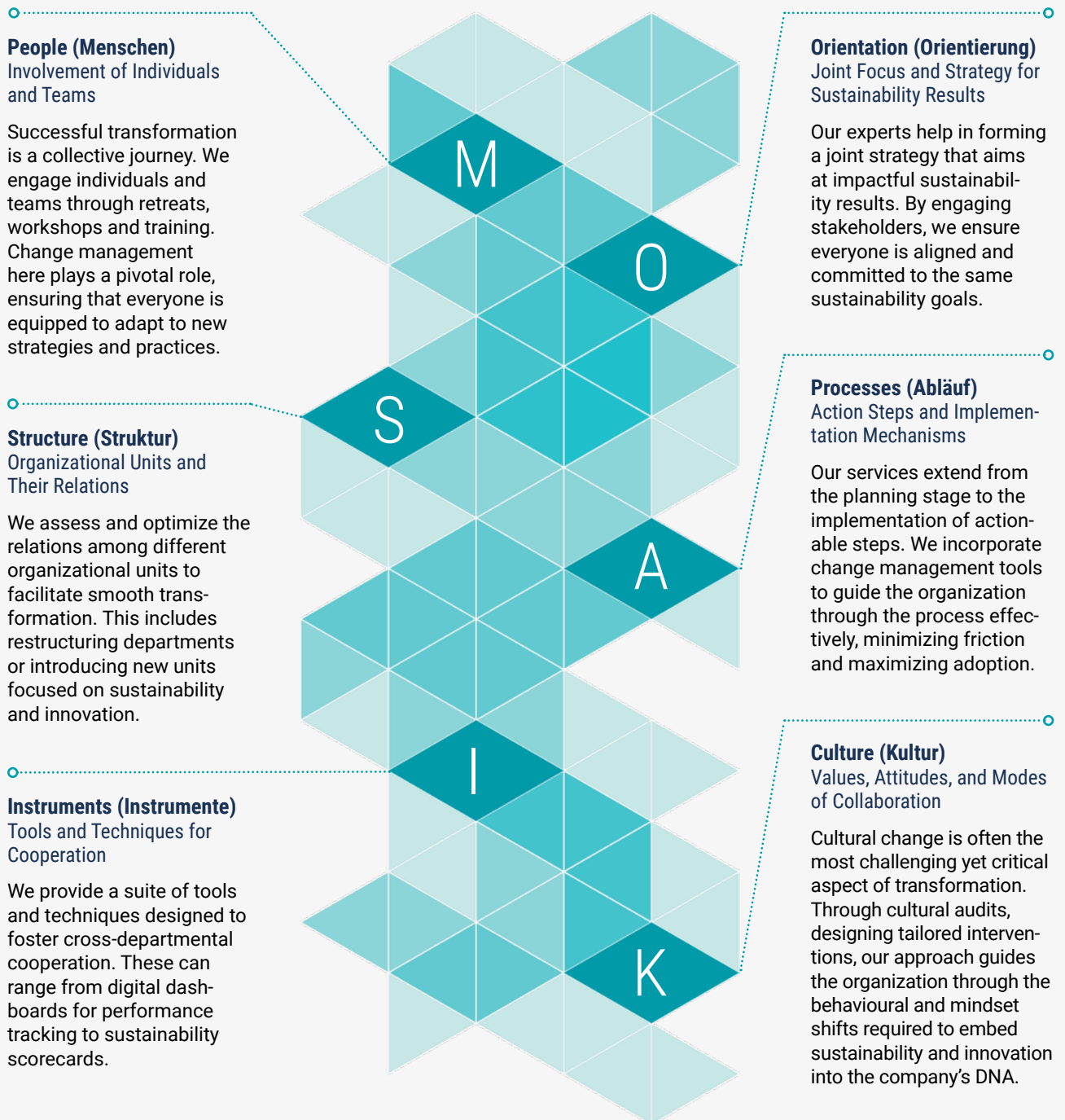
# INNOVATION-POWERED ORGANIZATIONAL TRANSFORMATION

## THE MOSAIK APPROACH

To be able to implement sustainability strategies, companies need to transform their organizational, and sometimes their business models to innovate and become sustainability driven. Beyond Group leverages the MOSAIK Model to align businesses with a more responsible and

sustainable future. MOSAIK—an acronym for Menschen (People), Orientierung (Orientation), Struktur (Structure), Abläufe (Processes), Instrumente (Instruments), and Kultur (Culture)—offers an integrative framework for transformation.

## THE PILLARS OF THE MOSAIK MODEL



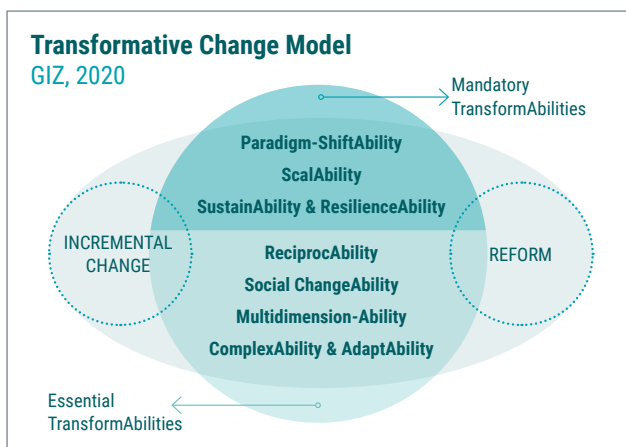
GOVERNMENTS: THE POLICY & SYSTEM ENABLER

# SYSTEMIC SOLUTIONS & CAPACITY SHARING

Governments play a crucial role as enablers within the sustainability ecosystem, crafting policy solutions and shaping systems for positive change. In a world calling for transformation at an unprecedented scale, Beyond Group is supporting central and local governments as well as development partners in the transition towards a more equitable, sustainable, and resilient future. Our approach is aligned with the paradigm shift proposed by the Transformative Change Model of GIZ, 2020, emphasizing systemic policy solutions that transcend incremental reforms. This shift focuses on fostering well-being and sustainability over mere economic growth.

Our initiatives aim to catalyze transformations across system levels—from local communities to national systems—adhering to the UN’s 2030 Agenda and advancing towards carbon-neutral societies. Furthermore, we prioritize capacity sharing among stakeholders to amplify sustainable practices and innovations. Guided by our value-based leadership and experiential learning methods, we strive to empower organizations and stakeholders. Our collaborative efforts promote trust, mutual respect, and informed decision-making, steering us towards genuine transformation beyond conventional reform.

Our comprehensive capacity-building efforts are geared toward creating networks and partnerships that redefine leadership in sustainability, contribute to resilient ecosystems, and aim for an economic model centered on well-being rather than mere growth.



## SYSTEMIC POLICY SOLUTIONS DESIGN

Our Policy Evolution Framework acts as a vehicle to support local and national governments for policy design, implementation, and monitoring. We incorporate cultural dimensions in the framework to ensure our interventions are driven by contextual narratives and aspirations. Our approach to policy design addresses current challenges while paving the way for a more sustainable and inclusive future.

## PILLARS OF THE POLICY EVOLUTION FRAMEWORK



### Innovative Policy Design

Focuses on creating forward-thinking policies that challenge existing norms and pave the way for systemic change over mere adjustments.



### Scalable Impact

This dimension emphasizes the design of policies with the potential for widespread application, ensuring they can be adopted broadly to initiate significant change.



### Durability & Resilience

Aims at developing policies that are both enduring and adaptable, capable of withstanding future challenges and evolving as needed.



### Cultural Integration

Highlights the importance of aligning policies with local cultural values and practices, ensuring greater community acceptance and sustainability.



### Holistic Approach

Advocates for addressing economic, social, technological, and environmental aspects simultaneously, ensuring comprehensive and foundational changes.



### Community Engagement

Stresses the necessity of involving communities in the policy-making process, enhancing societal support and participation.



### Systemic Flexibility

Encourages policies that are adaptable and capable of navigating complex systems, fostering ongoing learning and adaptation.



### Mutual Exchange

Promotes collaborative relationships and knowledge exchange between all stakeholders, integrating diverse perspectives for resilient and inclusive policy outcomes.

## CAPACITY SHARING FOR LEADERSHIP ENGAGEMENT

Beyond Group has a specialized Capacity Sharing Offer targeted at governments development partners and businesses. Leveraging our expertise in value-based leadership engagement, experiential learning, and deep sustainability initiatives, our offer aims to create a foundation for transformative change in sustainability practices, with the following components:

### Sustainable Leadership Development for Governments & Development Sectors

Our Sustainable Leadership Development approach is inspired by Steve Schein book about “A New Psychology of Sustainable Leadership”. In close collaboration with our clients, we identify critical leadership gaps and needs within governmental and developmental sectors. We engage stakeholders in experiential learning journeys, rooted in the values of trust, responsibility, and long-term sustainability, to fill these gaps effectively.

### Experiential Learning for Public Sector Officials

Building upon our proven Experiential Learning Approach, inspired by David Kolb we offer an array of programs customized for the public sector as well as to the private sector. These hands-on programs provide essential tools and learning opportunities that empower organizations and their stakeholders to enact meaningful, long-lasting change in line with sustainability goals.

### Network Building & Collaboration

Our extensive understanding of various industries enables us to facilitate the formation of impactful local, regional, and international networks for our clients. We employ strategic stakeholder engagement to foster a culture of trust, laying the groundwork for more effective sustainability leadership.

#### CASE STUDY:

### Innovation Transformation for ECC: The Environment & Climate Change Canada

The Innovation Transformation Program aims to support ECC's innovation capacity by employing a design thinking process to develop and adopt innovative solutions and facilitating deep internal organizational transformation. Through practical work and experiential learning, it addresses challenges within ECC's focus areas, fostering a culture of innovation to tackle complex environmental issues and develop sustainable policies and actions at one of Canada's key governmental departments responsible for environmental stewardship.



Environment and Climate Change Canada  
Environnement et Changement climatique Canada



#### PUBLICATIONS

### RESET RESULTS Enabling Transitions 2023

RESET is a program funded by the European Union – ENI CBC Med Programme that aims to stimulate the green economy in the Mediterranean region. Its objective is to gather and synthesize effective strategies, policies, and regulations for supporting sustainable and green businesses. The project adopts a three-tier approach: Capitalisation Framework, Capitalisation Lab, and Capitalisation Clinic.

The ultimate goal of the initiative is to propel economic and social development by way of a more sustainable, green economy. It endeavours to endow stakeholders, especially women and the youth, with the requisite knowledge and tools to foster sustainable businesses.

The data and insights gathered from the Capitalisation Framework, Lab, and Clinic serve to influence and reshape policy directives and governmental regulations related to the green economy. Through leading a more cohesive regional approach to economic and social development, RESET drives forward a shared vision for sustainability across government bodies in the Mediterranean region.

#### EXPLORE RESET PUBLICATIONS:



INNOVATION & TECHNOLOGY INTEGRATION

# DIGITAL SOLUTIONS FOR SCALABLE & SUSTAINABLE ECOSYSTEM MOMENTUM

Through our Innovation and Technology Integration Practice, Beyond Group provides technology solutions designed to drive sustainability principles through digital initiatives of communities, businesses, and governmental organizations. We leverage cutting-edge technologies to address some of the most pressing sustainability challenges of our time.

## EM-SDI ECOSYSTEM MANAGEMENT FOR STRATEGY DEVELOPMENT & IMPLEMENTATION

EM-SDI provides a 360-degree solution from strategy development to implementation with an ecosystem approach that leverages all stakeholders participation in design and delivery. Utilizing advanced analytics and data visualization, it offers strategic insights into environmental, social, and governance metrics, thereby facilitating informed decision-making. It is an effective and participatory instrument that assists organizations in monitoring sustainability strategy implementation and ensures accurate impact assessment and reporting.

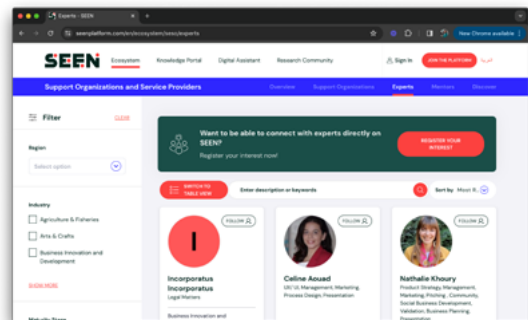
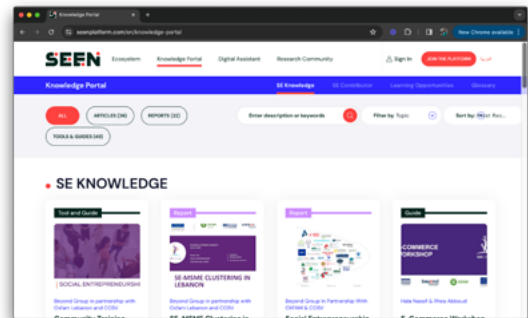
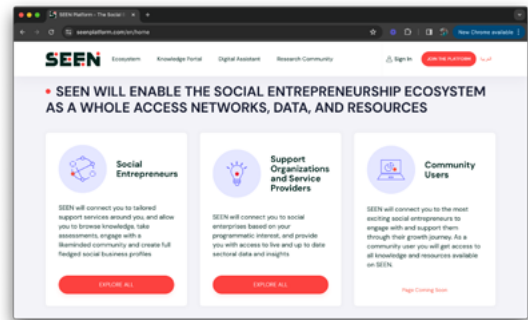
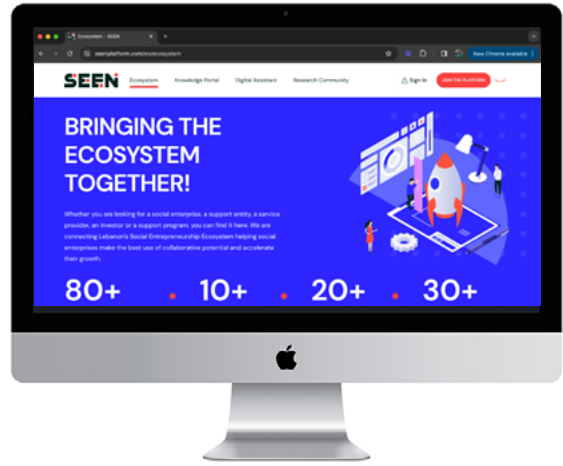
**USE CASE**

**SEEN PLATFORM**

Social Entrepreneurship Ecosystem Navigator

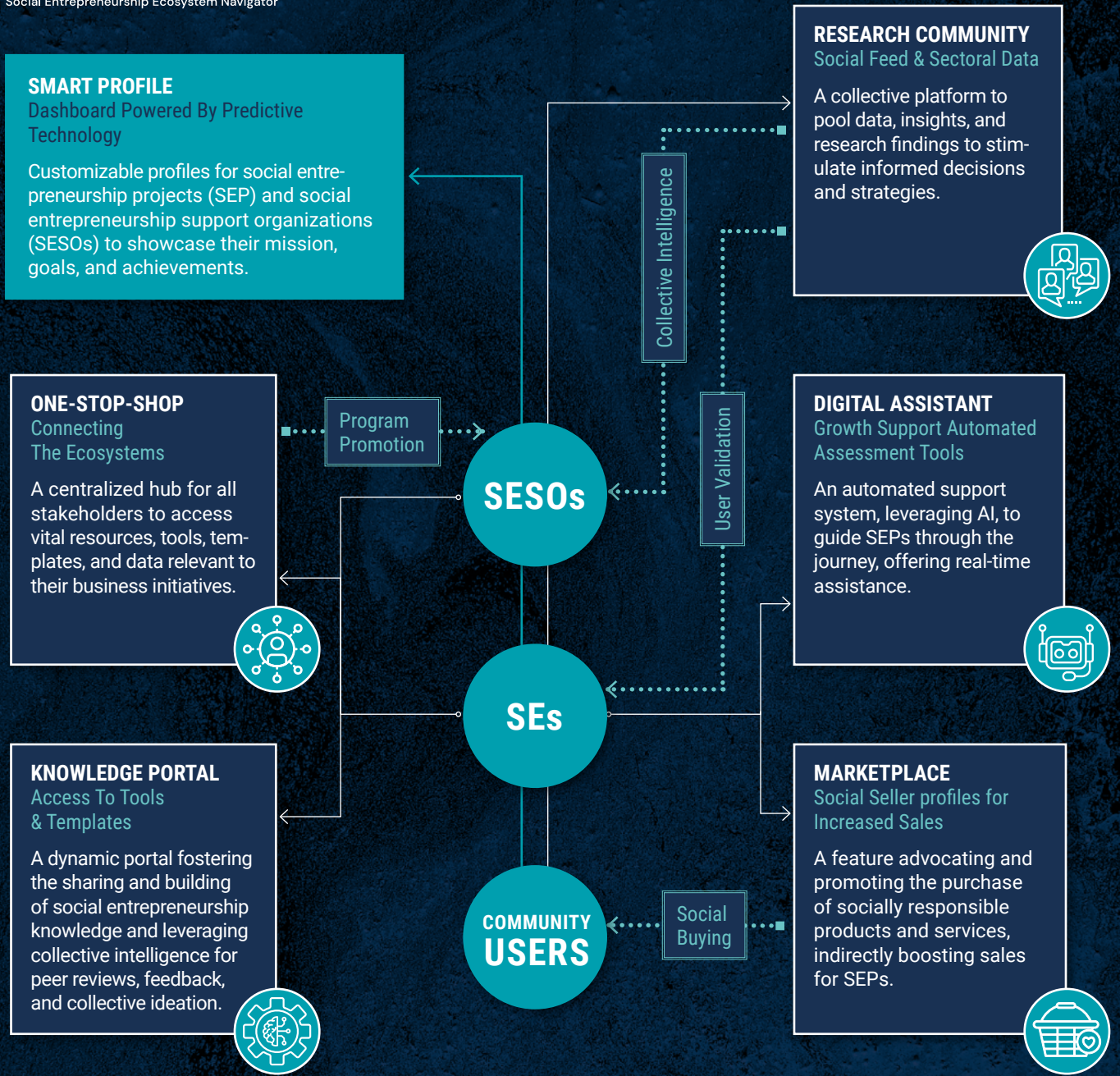
Despite significant and growing interest, the Social Entrepreneurship sector in the MENA region grapples with a myriad of challenges including strategic misalignment, policy constraints, data accessibility, fragmented support, and resource scarcity.

SEEN Platform is our answer to a palpable need for an ecosystem management platform catering to the social entrepreneurship sector. The platform enables the creation of a community of SE stakeholders. By bridging the gap between social entrepreneurs, support organizations, and policy making entities, SEEN promotes the alignment of strategies, pooling of resources, and sharing of insights, to foster collective growth across the social entrepreneurship sector in the MENA region.



# SEEN

Social Entrepreneurship Ecosystem Navigator



## POWERED BY

### PREDICTIVE TECHNOLOGY

Harnessing AI and machine learning to anticipate trends, challenges, and opportunities in the SE space.



### AUTOMATED SE SUPPORT

Streamlining processes and providing automated tools and resources for SEPs.



### USER VALIDATION

Ensuring the credibility and authenticity of SEPs and SESOs.



### AI ENABLED ASSESSMENT TOOLS

Tools to assess the viability, impact, and scalability of SEP initiatives.



Beyond Group is a multinational consulting firm with representation in Germany, Cyprus, Georgia, and Lebanon serving partners and clients in Europe, MENA, GCC and Central Asia & The Caucasus.

The Group brings together a diverse team of experts to deliver multidisciplinary and cross-sectoral services through its change-driven practices: Public Policy & Management, Organizational Learning & Development, and Innovation & Technology Integration.

We collaborate with governments, development partners, multilateral agencies, businesses, civil society organizations, communities and academic institutions around the world to design and realise integrated solutions, responding to local needs while capitalizing on global knowledge and partnerships.

Relying on our capacity to navigate between local specificities and global knowledge, Beyond Group builds lasting partnerships, innovates policies and systems, and empowers people and organizations to become more agile, innovative and responsive to the needs, challenges and opportunities presented by today's shifting world.

## BEYOND GROUP SERVICES:

### Public Policy & Management

Policy Research  
Strategy Design  
Stakeholder Engagement

### Organizational Learning & Development

Organizational Development.  
Change Management  
Capacity Building

### Innovation & Technology Integration

Innovation Services  
Technological Solutions  
Digital Transformation

**KOMPETUS** *member of Beyond Group*

BERLIN, Germany



## SUPPORTING YOUR SUSTAINABILITY TRANSFORMATION JOURNEYS

*Strategy Design & Organizational Consulting  
For Sustainability & ESG*

[www.kompetus.de](http://www.kompetus.de)